

# **ADAM`S ROMANIA ASSEMBLY**

**Fun & Unique facts about Romania**

# WHERE IS ROMANIA?

**România** [romi'ni.a] is a country at the crossroads of Central, Eastern and Southeast Europe. It borders Ukraine, Hungary , Serbia , Bulgaria, Moldova , and the Black Sea. It has a population of 19 million people (2023). Romania is the twelfth-largest country in Europe and the sixth-most populous member state of the European Union.









# Living Rocks That Grow and Move!

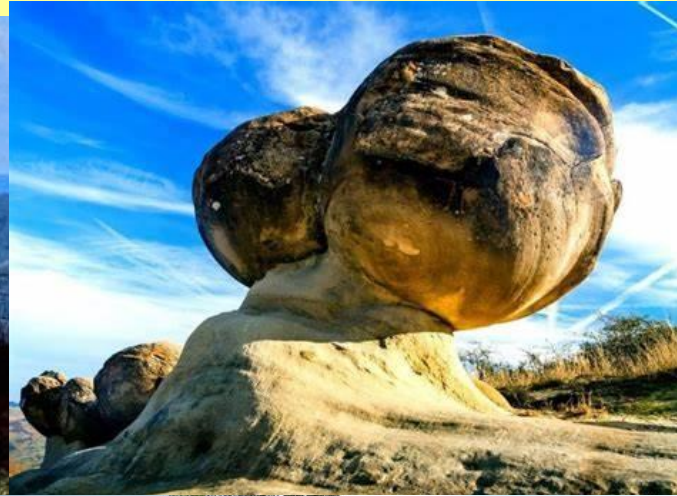
## Fun fact!!!

Welcome to the extraordinary world of the [geological manifestations](#) known as trovants. These rare bulbous, budging boulders are only found in a small town in Romania called Costesti. So fantastical are these trovants, they've found a place in local folklore. Some say they grow, walk and even give birth to baby trovants.

Science says they're probably right.



# Trovants Are The Mysterious 'Living' Stones Of Romania





# Turda Salt Mine is the world's most spectacular natural underground formation, shaped by people

Salt was first extracted here during the [ancient times](#). The mine continuously produced [table salt](#) from the [Middle Ages](#).

The **depth** from the mouth of the shafts to the base of the **mine** is 112 metres (367 ft).

**Did you know?!?**

Humans need salt in their diet to survive. The word salt comes from the Latin word "sal," meaning salt. It was once a valuable commodity, and it has been used as a currency for trading. The English word "salary" comes from the word salt.





Some images of me  
at Turda SALT MINE





# The Romanian Brown Bear's Habitat

Romania is home to 60% of Europe's brown bears. There are believed to be over 200,000 brown bears in the world, of which **6,000 of them roam Romania's forests in the Carpathian Mountains - the largest population of bears in Europe.**

\*

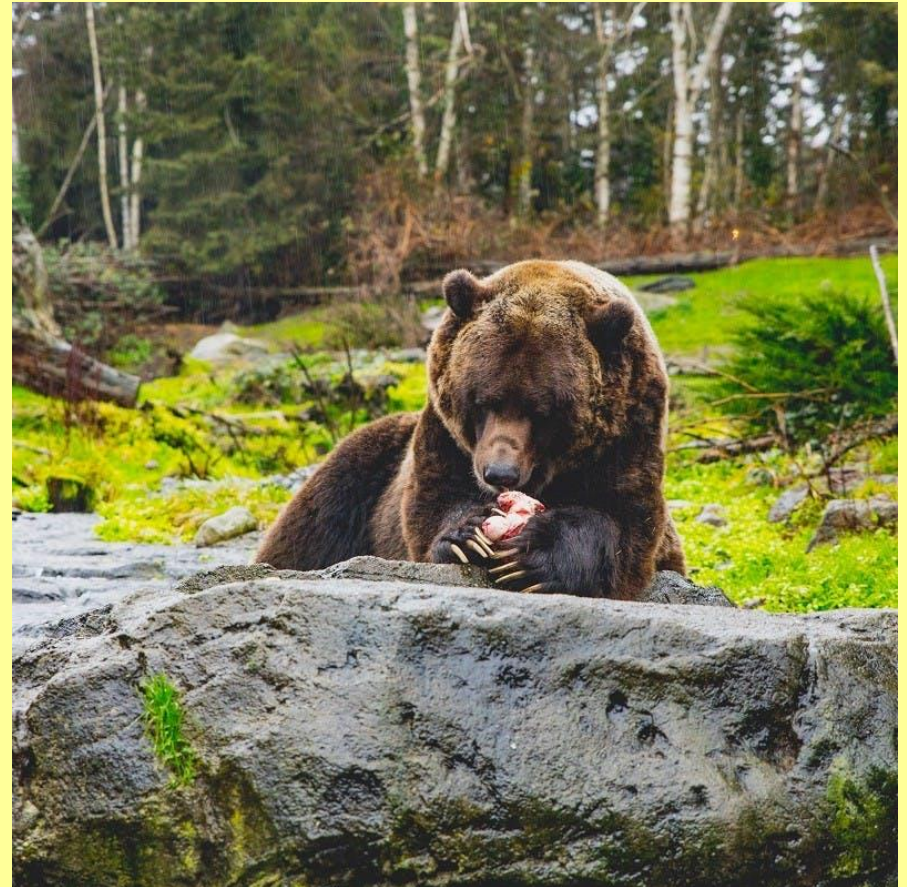
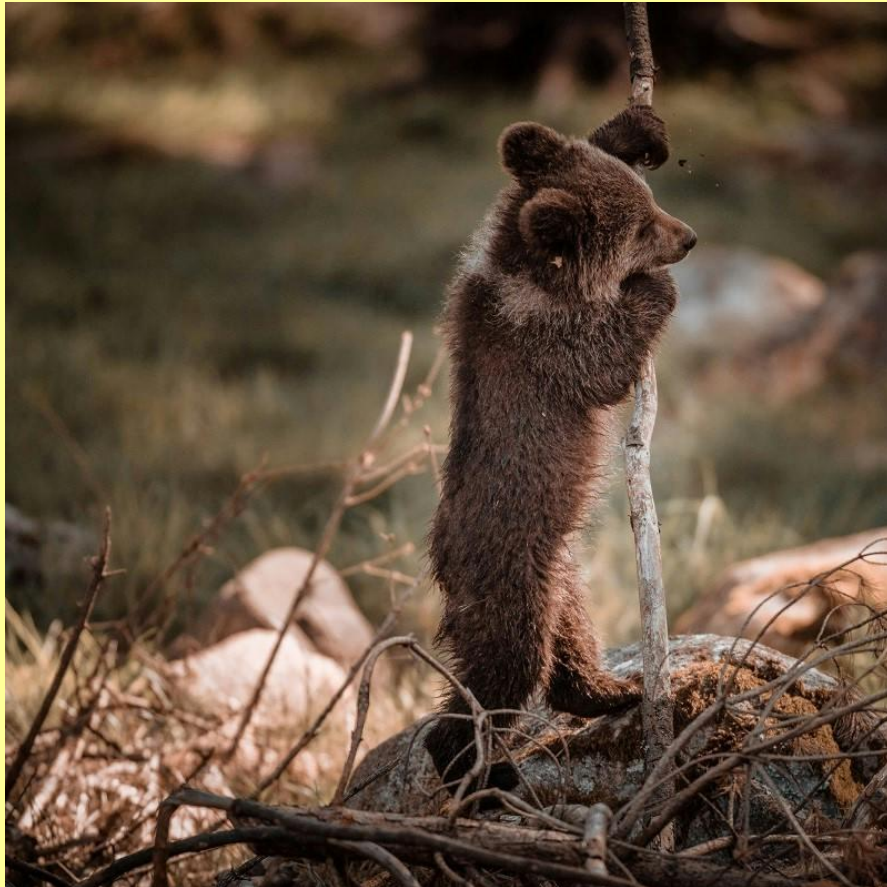


Picture was taken by me on a trip to Romanian Carpathian mountains at 2,400 m above sea level

The modern day brown bear's diet is mainly vegetarian despite claiming the title of Europe's largest carnivore.

**Are brown bears dangerous?**

In short, yes bears can be dangerous, but it must be stated **they instinctively avoid humans and only attack if they feel threatened.**





# Heaviest building in the world

You might expect that the heaviest building in the world is located somewhere in the Middle East, or perhaps the US or Japan but that's not the case. The Palace of Parliament in Bucharest, also known as the House of the Republic is officially the heaviest building in the world. This might come as a surprise but this palace is actually heavier than The One World Trade Center, the Pyramid of Khufu, The NASA Vehicle Assembly Building, and the Great Mosque of Mecca.



**Weights 4.10 million tons**



**Thank you for listening**



Thank you



Thank you,  
Adam, for a  
fascinating  
assembly.